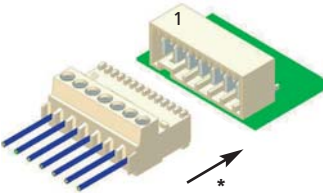
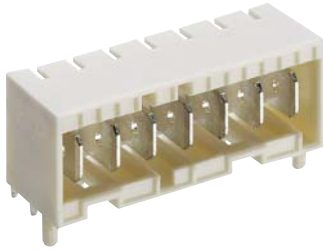
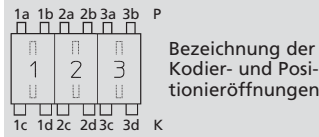


**Kodierungen nach RAST 5 für Macromodul-Messerleiste 3644**  
**Keyings according to RAST 5 for Macromodul tab header 3644**  
**Codages suivant RAST 5 pour réglette à couteaux Macromodul 3644**



**3644**

Für diese Messerleiste schlägt Lumberg die unten dargestellten Kodierungen vor. Weitere Kodierungen sind auf Anfrage möglich.



Bezeichnung der Kodier- und Positionieröffnungen

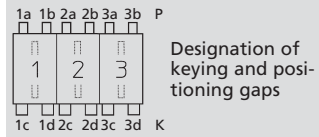
**Steckweise indirekt**, mit RAST-5-Steckverbinder:

Kodierung durch Kodiernasen am Steckverbinder und entsprechende Öffnungen an der Messerleiste

Alle Zeichnungen in Steckrichtung (\*) gesehen

**3644**

For this tab header, Lumberg proposes the keyings listed below. Further keyings are possible on request.



Designation of keying and positioning gaps

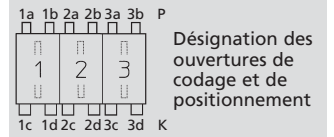
**Indirect connection**, with RAST 5 connector:

Keying by means of keying noses at the connector and matching gaps at the tab header

All drawings in view of mating direction (\*)

**3644**

Pour cette réglette à couteaux Lumberg propose les codages ci-dessous. Autres codages sont possibles sur demande.



Désignation des ouvertures de codage et de positionnement

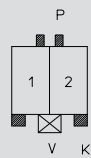
**Connexion indirecte**, avec connecteur RAST 5 :

Codage par plots de codage au connecteur et ouvertures correspondantes à la réglette à couteaux

Tous dessins vus dans le sens d'enfichage (\*)

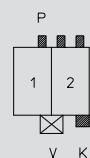
**2**  
 2-polig  
 2 poles  
 2 pôles

**3644 02 K01**



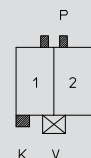
Kodierung/keying/codage:  
 P 1b 2a, K 1c 2d, V 1/2

**3644 02 K07**



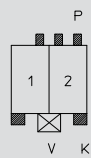
Kodierung/keying/codage:  
 P 1b 2ab, K 2d, V 1/2

**3644 02 K14**



Kodierung/keying/codage:  
 P 1b 2a, K 1c, V 1/2

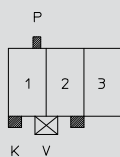
**3644 02 K78**



Kodierung/keying/codage:  
 P 1b 2ab, K 1c 2d, V 1/2

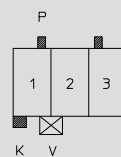
**3**  
 3-polig  
 3 poles  
 3 pôles

**3644 03 K01**



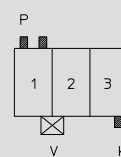
Kodierung/keying/codage:  
 P 1b, K 1c 2d, V 1/2

**3644 03 K03**



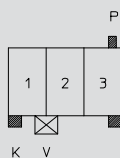
Kodierung/keying/codage:  
 P 1b 3a, K 1c, V 1/2

**3644 03 K05**



Kodierung/keying/codage:  
 P 1ab, K 3d, V 1/2

**3644 03 K37**

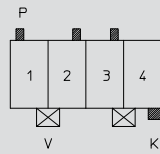


Kodierung/keying/codage:  
 P 3b, K 1c 3d, V 1/2

# 4

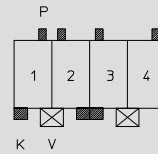
4-polig  
 4 poles  
 4 pôles

## 3644 04 K31



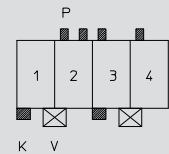
Kodierung/keying/codage:  
 P 1a 2b 3b, K 4d, V 1/2 3/4

## 3644 04 K79



Kodierung/keying/codage:  
 P 1b 2a 3a 4b, K 1c 2d 3c, V 1/2 3/4

## 3644 04 K100

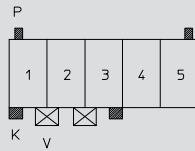


Kodierung/keying/codage:  
 P 2ab 3a 4a, K 1c 3c, V 1/2 3/4

# 5

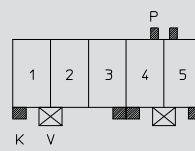
5-polig  
 5 poles  
 5 pôles

## 3644 05 K01



Kodierung/keying/codage:  
 P 1a 5b, K 1c 3d, V 1/2 2/3

## 3644 05 K45

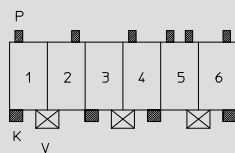


Kodierung/keying/codage:  
 P 4b 5a, K 1c 3d 4c 5d, V 1/2 4/5

# 6

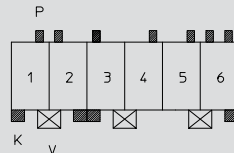
6-polig  
 6 poles  
 6 pôles

## 3644 06 K06



Kodierung/keying/codage:  
 P 1a 2b 4a 5ab 6b, K 1c 3c 4d 6d, V 1/2 3/4 5/6

## 3644 06 K66

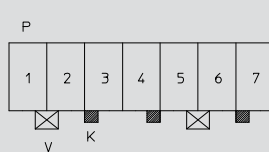


Kodierung/keying/codage:  
 P 1b 2a 3a 4b 5b 6ab, K 1c 2d 3c 6d, V 1/2 3/4 5/6

# 7

7-polig  
 7 poles  
 7 pôles

## 3644 07 K01

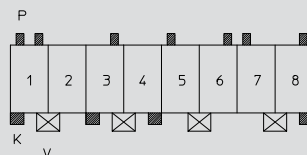


Kodierung/keying/codage:  
 K 3c 4d 7c, V 1/2 5/6

# 8

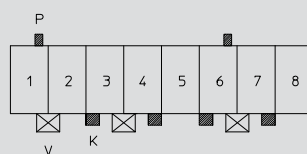
8-polig  
 8 poles  
 8 pôles

## 3644 08 K38



Kodierung/keying/codage:  
 P 1ab 3b 5a 6b 7a 8b, K 1c 3c 4d 8d, V 1/2 3/4 5/6 7/8

## 3644 08 K42

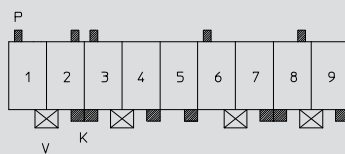


Kodierung/keying/codage:  
 P 1b 6b, K 3c 4d 6c 7d, V 1/2 3/4 6/7

**9**

9-polig  
 9 poles  
 9 pôles

**3644 09 K35**



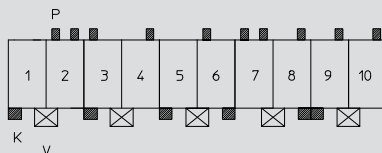
Kodierung/keying/codage:

P 1a 2b 3a 6a 8b, K 2d 3c 4d 5d 7d 8c 9d, V 1/2 3/4 6/7 8/9

**10**

10-polig  
 10 poles  
 10 pôles

**3644 10 K78**



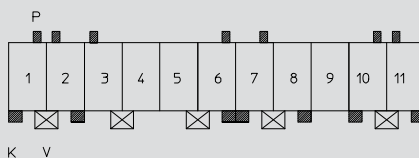
Kodierung/keying/codage:

P 2ab 3a 4b 6a 7ab 8b 9b 10b, K 1c 3c 5c 6d 8d 9c, V 1/2 3/4 5/6 7/8 9/10

**11**

11-polig  
 11 poles  
 11 pôles

**3644 11 K28**



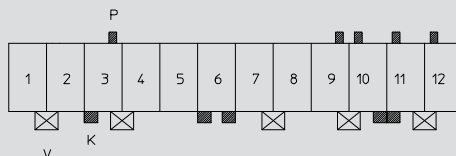
Kodierung/keying/codage:

P 1b 2a 3a 6b 7b 10b 11a, K 1c 2d 6d 7c 8d 10c 11d, V 1/2 3/4 5/6 7/8 10/11

**12**

12-polig  
 12 poles  
 12 pôles

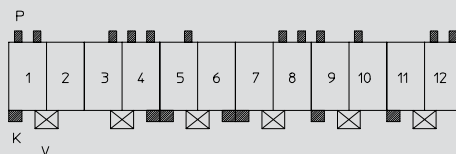
**3644 12 K42**



Kodierung/keying/codage:

P 3b 9b 10a 11a 12a, K 3c 6cd 10d 11c, V 1/2 3/4 7/8 9/10 11/12

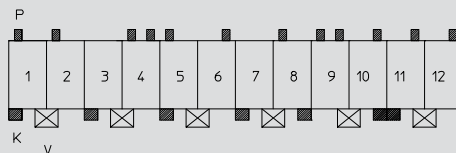
**3644 12 K60**



Kodierung/keying/codage:

P 1ab 3b 4ab 5b 8ab 9a 10a 12ab, K 1c 4d 5c 6d 7c 9c 11c, V 1/2 3/4 5/6 7/8 9/10 11/12

**3644 12 K61**



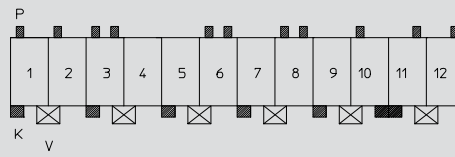
Kodierung/keying/codage:

P 1a 2a 4ab 5a 6b 8a 9ab 10b 11b 12b, K 1c 3c 5c 7c 8d 10d 11c, V 1/2 3/4 5/6 7/8 9/10 11/12

# 12

12-polig (Fortsetzung)  
12 poles (continued)  
12 pôles (suite)

## 3644 12 K62



Kodierung/keying/codage:

P 1a 2a 3ab 6ab 8ab 10a 11b 12b, K 1c 3c 5c 7c 9c 10d 11c, V 1/2 3/4 5/6 7/8  
9/10 11/12